

# Vermeer®

Utility Tractor

# RTX550



# Vermeer®

# RTX550

## The Ultimate Utility Machine

While sharing many of the proven features and components found on larger models in the Vermeer® X-Series line of utility tractors, the new RTX550 carves its own path with industry-leading maneuverability.

Rubber tires or rubber quad-track system? With the RTX550 and its specialized, heavy-duty undercarriage designed to handle the rigors of both traction options, the choice is yours.

Plus, it's the only utility tractor in its class with standard differential locks for added traction.

The RTX550 boasts a 65-hp (48.5 kW) Cummins diesel engine and an electronically controlled tandem hydraulic pump system, both tuned for optimum performance. Dual ground drive and attachment speed control knobs keep the power at your fingertips for enhanced machine control.

Package all this with an extensive selection of available front and rear attachments and you'll see how Vermeer has again taken productivity and versatility to the next level.



**An integrated system display** enables the operator to easily toggle through machine diagnostics and performance information. The multilingual display can be viewed in English, Spanish, German, French, Italian, Polish, Portuguese or Russian depending on the operator's preference.



**See the difference.** When equipped with the innovative quad-track system, the RTX550 offers improved floatation, reduced surface damage, increased tractive effort and greater stability. Four-wheel steer and crab steering are functional with the system.



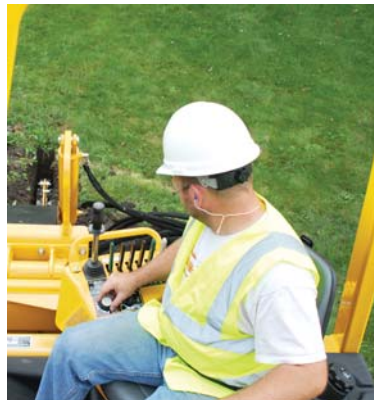
**Tire options.** The RTX550 is available with standard 31" (78.7 cm) tires. For even greater floatation, choose the 35" (88.9 cm) tire option.



## Increase Traction and Stability



**Stall no more.** The patent-pending TrenchSense™ electronic controls system can help reduce engine stops caused by difficult ground conditions. If tough conditions cause a sudden drop in engine rpm, the tractor pauses forward creep, backs up a couple inches, and slightly reverses the trencher chain – all with no intervention required by the operator. Once the engine recovers, forward trencher chain motion and forward creep automatically resume.



**Change your view.** The operator's station, including all attachment controls, rotates up to 90 degrees for visibility of the rear attachment and for operator comfort.

## RTX550 Attachments



**Backhoe.** Designed for optimal downward force, the backhoe offers a maximum digging depth of 92.3" (234.4 cm).



**Trencher.** Available in a center-mount or sliding-offset configuration, the trencher is capable of depths reaching 60" (152.4 cm) and widths up to 12" (30.5 cm).



**Vibratory plow.** When teamed with the quad-track system, the plow is capable of reaching depths up to 36" (91.4 cm).



**Combo vibratory plow / trencher.** Multi-use rear attachment can plow depths up to 36" (91.4 cm) and trench depths up to 60" (152.4 cm).

**Rockwheel.** Rugged construction for depths up to 26" (66 cm) at 6" (15.2 cm) wide.



# RTX550 Specifications

## General

Length (basic tractor, tires): 123.5" (313.7 cm)  
Length (basic tractor, quad-track system): 129.4" (328.7 cm)  
Width (basic tractor, tires): 72.4" (183.9 cm)  
Width (basic tractor, quad-track system): 70.5" (179.1 cm)  
Height (basic tractor, tires): 96.8" (245.9 cm)  
Height (basic tractor, quad-track system): 98.2" (249.4 cm)  
Weight (basic tractor, tires): 5600 lb (2540.1 kg)  
Weight (basic tractor, quad-track system): 7800 lb (3538 kg)  
Wheelbase (from c/l of axles): 61" (154.9 cm)  
Ground clearance [31" (78.7 cm) tires]: 8.8" (22.4 cm)  
Ground clearance [35" (88.9 cm) tires]: 10.2" (25.9 cm)  
Rollover protection structure rating: 17,000 lb (7711.1 kg)

## Capacities

Fuel tank: 27 gal (102.2 L)  
Hydraulic tank: 18 gal (68.1 L)  
Hydraulic system: 20 gal (75.7 L)  
Coolant: 3.1 gal (11.7 L)

## Engine

Make and model: Cummins B3.3  
Horsepower (max, gross): 65 hp (48.5 kW)  
Displacement: 199 cu in (505.5 cu cm)  
Number of cylinders: 4  
Cooling medium: Water  
Compression ratio: 20.1:1  
Max engine operating angle\*: 35 degrees  
Fuel type: Diesel  
Air cleaner: Dry with safety element

*\*Engine operating angles do not indicate safe machine operating angles.*

## Hydraulics

Ground drive pump capacity: 31 gpm (117.3 L/min)  
Ground drive pump relief: 4350 psi (299.9 bar)  
Attachment pump capacity: 31 gpm (117.4 L/min)  
Attachment pump relief: 5080 psi (350.3 bar)  
Auxiliary pump capacity: 18.1 gpm (68.5 L/min)  
Auxiliary pump relief: 2700 psi (186.2 bar)

## Traction Options

Rubber tires – 31" (78.7 cm)  
Tire size: 31" x 15" (78.7 cm x 38.1 cm)  
Max transport speed: 5.6 mph (9 k/hr)

Max creep speed: 2 mph (3.2 k/hr)  
Ground pressure (tractor, trencher, backhoe): 21.8 psi (1.5 bar)  
Weight (foam-filled, per tire): 220 lb (99.8 kg)  
Rubber tires – 35" (88.9 cm)  
Tire size: 35" x 19" (88.9 cm x 48.3 cm)  
Max transport speed: 6.1 mph (9.8 k/hr)  
Max creep speed: 2.2 mph (3.5 k/hr)  
Ground pressure (tractor, trencher, backhoe): 19.3 psi (1.3 bar)  
Weight (foam-filled, per tire): 380 lb (172.4 kg)  
Rubber quad-track system  
Length: 43" (109.2 cm)  
Width: 15" (38.1 cm)  
Max transport speed: 4.7 mph (7.6 k/hr)  
Max creep speed: 1.7 mph (2.7 k/hr)  
Ground pressure (tractor specs): 4.4 psi (.3 bar)

## Axles

Axle type (front): Steerable planetary  
Axle type (rear): Steerable planetary with gearbox  
Axle load rating (per axle): 11,250 lb (5102.9 kg)  
Outside turning diameter (tires, front and rear steer): 18.8' (5.7 m)  
Outside turning diameter (tires, front steer only): 29.8' (9.1 m)  
Outside turning diameter (quad-track system, front and rear steer): 20.1' (6.1 m)  
Outside turning diameter (quad-track system, front steer only): 31.7' (9.7 m)

## Center-Mount Trencher

Length (min, transport): 80.8" (205.2 cm)  
Height (transport): 87.5" (222.3 cm)  
Weight (without boom and chain): 1430 lb (648.6 kg)  
Max depth: 60" (152.4 cm)  
Max width: 12" (30.5 cm)  
Min width: 5" (12.7 cm)

## Sliding Offset Trencher

Length (min, transport): 86" (218.4 cm)  
Height (transport): 87.5" (222.3 cm)  
Weight (without boom and chain): 1520 lb (689.5 kg)  
Max offset: 24" (61 cm)  
Max depth: 60" (152.4 cm)  
Max width: 12" (30.5 cm)  
Min width: 5" (12.7 cm)

## Vibratory Plow

Length (min, transport): 74" (188 cm)  
Height (transport): 84" (213.4 cm)  
Weight (without blade): 1050 lb (476.3 kg)  
Max depth (rubber tires): 30" (76.2 cm)  
Max depth (quad-track system): 36" (91.4 cm)

## Rockwheel

Length (min, transport): 84.6" (214.9 cm)  
Height (transport): 97.1" (246.6 cm)  
Weight (without segments/teeth): 2480 lb (1124.9 kg)  
Max depth: 26" (66 cm)  
Max width: 6" (15.2 cm)  
Min width: 4" (10.2 cm)

## Combo Plow / Trencher

Length (min, transport): 86" (218.4 cm)  
Height (transport): 93" (236.2 cm)  
Weight boom, without blade: 2180 (988.8 cm)  
Max plow depth (quad tracks): 36" (91.4 cm)  
Max plow depth (tires): 30" (76.2 cm)  
Max trencher depth: 60" (152.4 cm)  
Max trencher width: 8" (20.3 cm)

## Backhoe

Length (min, transport): 68.1" (173 cm)  
Height (transport): 112.8" (286.5 cm)  
Weight: 2030 lb (920.8 kg)  
Max reach: 11.8' (3.6 m)  
Max digging depth (flat bottom): 92.3" (234.4 cm)  
Swing arc: 170 degrees

## Reel Carrier

Weight: 857 lb (388.7 kg)  
Max reel diameter: 84" (213.4 cm)  
Max reel width: 49" (124.5 cm)  
Reel shaft diameter: 2.25" (5.7 cm)  
Capacity: 2000 lb (907.2 kg)

## Backfill Blade

Width: 79" (200.7 cm)  
Height: 14.6" (37.1 cm)  
Max swing blade: 30°



# The Vermeer dealer network: Reliable support, all over the world.



*With nearly 200 locations across the globe - you're never far from an independent, authorized Vermeer dealer. Our dealers are in place to support your success with product expertise that's second to none.*



*When you need service, you can count on your local Vermeer dealer. With multiple locations, remote service trucks, and factory-offered technician training, your local Vermeer dealer offers reliable service that keeps your equipment running.*



*Vermeer parts are designed and manufactured to original specifications, so whether they're new parts or replacement parts, they'll live up to the Vermeer name.*



**Vermeer EMEA**  
(Europe, Middle East, Africa and CIS)  
P.O. Box 323  
4460 AS Goes  
the Netherlands  
Phone: +31 113 272700  
Fax: +31 113 272727

**Vermeer Corporation**  
1210 Vermeer Road East  
P.O. Box 200  
Pella, Iowa 50219 U.S.A.  
Phone: (641) 628-3141  
Fax: (641) 621-7773  
International fax: +1 (641) 621-7730  
[www.vermeer.com](http://www.vermeer.com)

**Vermeer Asia Pacific**  
48 Toh Guan Road East  
#01-105 Enterprise Hub  
Singapore 608586  
Phone: +65 6516 9560  
Fax: +65 6515 9218

**Call toll-free 1-888-VERMEER**  
*1-888-837-6337 (USA only)*

Equipment shown is for illustrative purposes only and may display optional accessories or components. Please contact your local Vermeer dealer for more information on machine specifications. Vermeer Corporation reserves the right to make changes in engineering, design and specifications; add improvements; or discontinue manufacturing at any time without notice or obligation. Vermeer and the Vermeer logo are trademarks of Vermeer Manufacturing Company in the U.S. and/or other countries. Cummins is a trademark of Cummins Engine Company. © 2009 Vermeer Corporation. All Rights Reserved.